

February 2018

BY DESIGN



Excellence in Golf Design from the American Society of Golf Course Architects

Growing the game

Special Edition for the Sixth Annual ASGCA Design Excellence Recognition Program



TORO®

WHAT *Lynx® Smart Satellite.*

MATTERS *Flexible irrigation control.*

MOST *Dependable, on course feedback to speed your irrigation tasks.*

What Matters Most:
Simple, Smart System Design

- Reliable, high performance operation with backwards compatibility
- Enhanced wireless communication improves productivity
- Simplified, troubleshooting designed-in
- Future Proof with the capability of receiving hydraulic and weather sensor data with local or system responses

Only from Toro.

Join the conversation
 **@ToroGolf**

Call: 877-345-8676
Visit: toro.com/lynx

©2017 The Toro Company. All rights reserved.



Short is sweet

Welcome to a special edition of *By Design* devoted to the sixth annual ASGCA Design Excellence Recognition Program.

Each year we work with a panel of golf industry leaders, including representatives of the Club Managers Association of America, Golf Course Builders Association of America and Golf Course Superintendents Association of America, to select projects from the nominations received that we believe represent design excellence, and highlight the innovation and problem-solving skills required to create successful golf facilities.

This year in particular is notable by the number of projects highlighted within the program that were conceived either to help beginners get into golf, or to enable all golfers to enjoy the game in a shorter period of time than we usually associate with a traditional eighteen-hole round.

Golf is naturally suited to shortened formats, whether that be just playing a shorter loop on an eighteen-hole course, or enjoying a full round on a course with fewer and/or shorter holes. Many of us will have fond memories of learning to play the game in one of these ways, and it's great to see how proactive golf clubs are being in making sure they have facilities that encourage this.

I hope you enjoy the issue.



John Sanford, ASGCA
President
American Society of Golf Course Architects

BY DESIGN

Editor and Publisher: Toby Ingleton

Design: Bruce Graham

ASGCA Staff: Chad Ritterbusch; Therese Suslick; Mike Shefky; Aileen Smith; Marc Whitney

Photography: Dave Sansom; Ross Mungeam; Brian Walters; Jake Williams

Subscribe to *By Design* at www.tudor-rose.co.uk/bydesign

© 2018 American Society of Golf Course Architects.

All rights reserved. www.asgca.org

By Design is sponsored by:



Plaques for ASGCA Design Excellence Recognition Award Program recipients are provided by Morell Studios. Morell Studios has enjoyed over 40 years of experience providing museum quality custom awards, plaques and trophies to prestigious clubs and corporate organizations. www.morellstudios.com

CONTENTS

Growing the game 4

Introducing the projects cited for the sixth annual ASGCA Design Excellence Recognition Program.

Colleton River Club 7

Compass Pointe GC 9

Club de Golf de Panamá 10

Hunt Valley GC 11

Longleaf G&FC 12

Meadowbrook CC 13

Mountain Top Course 14

The Royal Ottawa GC 15

Vestavia CC 16

Wellesley CC 17

Westfield Group CC 18

COVER



The new golf course at Compass Pointe GC was designed by ASGCA Past President Rick Robbins, ASGCA, and Brian Lussier, ASGCA, and photographed by Dave Sansom.

Growing the game

The sixth annual ASGCA Design Excellence Recognition Program highlights some of the most creative and thoughtful golf projects that positively impact the game.

From new 18-hole layouts to practice facilities and putting greens, the ASGCA's Design Excellence Recognition Program showcases projects that demonstrate the problem-solving skills and creativity of golf course architects.

This year's selections highlight a wide range of innovative designs from ASGCA members, which also share a common attribute: encouraging growth in the game of golf. From short courses and new teeing complexes that make the game

more approachable to beginners, to comprehensive renovations that are revitalizing existing golf facilities and drawing people back into the sport, the projects profiled on the following pages are all promoting increased participation in golf.

Photo: Ross Wungcam

From left, the Carriage Course at Wellesley CC; Compass Pointe GC and Meadowbrook CC. Main image, the Mountain Top Course at Big Cedar Lodge



Tim Liddy, ASGCA

has helped return the course at Colleton River Club to the original character intended by Pete Dye, ASGCA Fellow.
Read more on page 7.



ASGCA Past President Rick Robbins, ASGCA, and Brian Lussier, ASGCA, have completed a new course at Compass Pointe that is helping drive real estate sales.
Read more on page 9.



Raymond Hearn, ASGCA has completed a renovation that addresses drainage issues so Club de Golf de Panamá can remain open all year.
Read more on page 10.



Jason Straka, ASGCA, and Dana Fry, ASGCA developed an innovative solution that made the best use of a modest renovation budget at Hunt Valley Golf Club.
Read more on page 11.



Bill Bergin, ASGCA implemented a renovation plan to help Longleaf Golf & Family Club become a leader for family golf.
Read more on page 12.



Andy Staples, ASGCA developed a plan to restore the quality of the golf experience at the historic Meadowbrook Country Club.
Read more on page 13.



Jeff Lawrence, ASGCA designed a unique short course that utilizes natural features and inspires golfers of all skill levels to play.
Read more on page 14.



Neil Haworth, ASGCA created a master renovation plan to help make facilities at The Royal Ottawa Golf Club more family-oriented.
Read more on page 15.



Lester George, ASGCA has completed a comprehensive renovation of Vestavia Country Club, delivering a playable and strategic design.
Read more on page 16.



Mark Mungeam, ASGCA has designed a new short course at Wellesley Country Club that is helping beginners to learn golf.
Read more on page 17.



ASGCA Past President Dr. Michael Hurdzan, ASGCA Fellow has created a Himalayas-style putting course to entertain both golf and non-golf members at Westfield Group CC.
Read more on page 18.



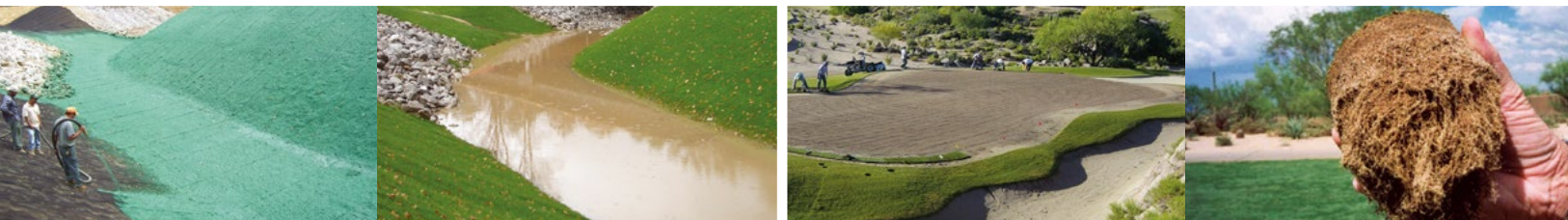
Photo: Dave Sansom



Photo: Brian Walters

Meeting your challenges from every angle.

EROSION CONTROL • VEGETATIVE ESTABLISHMENT • ROOTZONE DEVELOPMENT



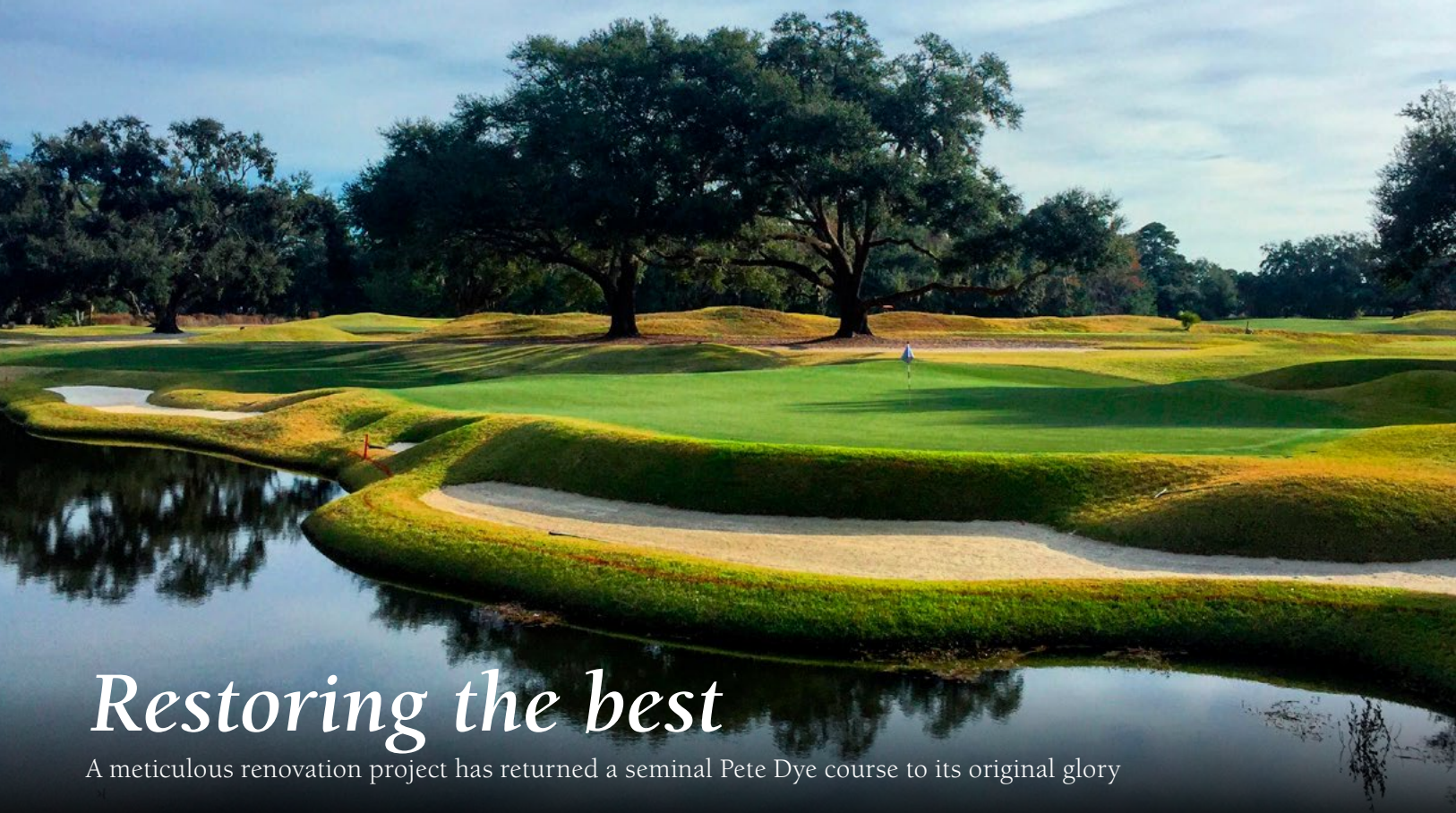
For any site condition you might face, we are here to meet that challenge. Nasty soil. Out-of-spec sands. Vertical embankments. Near-drought conditions. Monsoon rains. As the world's largest manufacturer of erosion control,

turf establishment and soil amendment products, Profile is backed by a team of experts and a global distribution network. You can count on ProfileGolf™ to bring the know-how anywhere in the world to deliver holistic, cost-effective solutions.

Contact Us for On-Site Consultation and Soil Evaluation.

golf@profileproducts.com • www.profilegolf.com • 800.207.6457





Restoring the best

A meticulous renovation project has returned a seminal Pete Dye course to its original glory

Pete Dye, ASGCA Fellow, called his design at Colleton River Club in Bluffton, South Carolina “the best I have ever built.” It is an outstanding example of the unique sculptured quality that Dye developed over his long career.

The course plays through forest and wetlands, with views out to the Port Royal Sound and Atlantic Ocean. It is considered among the best courses in South Carolina, and has hosted qualifying tournaments for the U.S. Amateur and U.S. Open championships.

From the first tee to the eighteenth green, Dye’s signature craftsmanship in the bunkering and green complexes is evident.

But in the years since it was built in 1998, this seminal golf course gradually lost much of that character. Bunkers and greens lost their unique shaping. Contours were softened and some of the more distinctive shapes had been lost, diminishing the highly

individual nature of the golf course. Time had taken away its character.

Tim Liddy, ASGCA, who was working for Pete Dye in 1998, led a restoration of the entire course, with an emphasis on returning the greens, bunkers and contours to their original shapes.

Liddy likened it to an archaeological project, uncovering original aspects of the course and bringing it back to its original beauty and contour. The restoration was handled with great care and precision, returning the visual impact that had been lost from many of the bunkers. “Restoring them to their original size, shape and contour immediately brought back the wonderful sculptured quality of this unique golf course,” says Liddy.

The work was performed by first carefully hand digging around the bunkers and greens to discover the original sand lines. Turf was then removed as well as layers of organic material which had built up over many years. Bunker contours were restored

under the watchful eyes of the architect, meticulously matching the original.

The result of this careful restoration was immediate. Its former glory restored. With the golf course’s unique visual impact now resonating, it is worthy once again to be called “the best I have ever built.”

Colleton River

Location:

Bluffton, South Carolina

Golf course architect:

Pete Dye, ASGCA Fellow (1998)

Restoration:

Tim Liddy, ASGCA (2016)

www.timliddy.com

Project summary: Since opening in 1998, this iconic Pete Dye golf course had lost much of its character, with many of its golf course features losing their shape and definition. Tim Liddy led a restoration project to return it to its original glory.

Partners: LaBar Golf Renovations (construction)



The Club at Admirals Cove discovered the power of a Total System Solution.

Only Rain Bird offers a full range of components from pump stations to rotors, giving golf courses a complete system of irrigation products that were designed to interact more efficiently and effectively. From Smart Pump™ Central Control technology that ensures maximum pump efficiency to exclusive Rain Watch™ technology that automatically adjusts sprinkler run times based on precipitation, top courses like The Club at Admirals Cove are gaining more control over irrigation by partnering with Rain Bird.

See what top golf maintenance professionals say about their Rain Bird systems at rainbird.com/GolfSolutions.



RAIN  BIRD®



Driver for development

A natural golf course has helped boost housing sales at the Compass Pointe community

Development of the 2,300-acre Compass Pointe community in Leland, North Carolina—a few miles west of the city of Wilmington—started before the 2008 financial crisis crippled the golf and housing industries. The recession meant golf course construction stalled for several years, and reduced housing sales eventually led to a change in ownership.

The new developer recognized that the golf course would play a crucial role in driving home sales in a retirement market that was already crowded. A high-quality course with features that would differentiate it from others was required, but within a budget that fit the financial constraints of the development.

Environmental considerations were also key, with the final delineation of wetlands to be agreed with regulatory agencies so the golf routing and areas available for housing could be set.

ASGCA Past President Rick Robbins, ASGCA, was retained, and he proposed a solution that would be

sensitive to its natural environment and unique in the area, while staying within cost limitations.

The golf course site comprises wooded areas, open wetlands and long views, with quite significant elevation change for this coastal region. It has been designed to be fun and very playable, focusing on appealing to the community it serves. It can even be played as an 18-hole par-three course. “We have added a set of real tees at between 75 and 150 yards on every hole,” says Robbins.

The routing fit within the existing wetlands, with design and maintenance that meets Audubon International standards. Robbins’ design makes a feature of existing vegetation, wetlands and the sandy soils to create a natural style that reduced construction costs and limited the area of active maintenance, to reduce water and chemical use.

Practice facilities were designed to be the best in the region. They include a substantial short game and practice area, with a large

driving range, 18-hole putting green, chipping area, sand shot area and an 80-yard par three that can be used as a 19th hole.

The design has proved to be a great draw. In its first year, Compass Pointe has hosted events for the Carolina Golf Association and the SwingThought Tour, and development sales are now in the region of 200 units a year.

Compass Pointe GC

Location:

Leland, North Carolina

Golf course architect:

ASGCA Past President Rick Robbins, ASGCA and Brian Lussier, ASGCA
Robbins Golf Design, PLLC
www.robbsingolf.com

Project summary: Careful planning, creative design and realistic scheduling were required to overcome environmental, financial and marketing challenges faced by the development of a new golf course and residential community after the recession.

Partners: Rain Bird (irrigation);
Profile Products (soil amendments)



Planning for success

A renovation project has made year-round play possible at one of Panama's leading golf clubs

One of only 13 clubs in Panama, Club de Golf de Panamá was originally formed in the 1920s by workers involved in the construction of the Panama Canal. The club moved to its present site in 1977, where the course designed by Jay Riviere and Charles Schaeffer has hosted the Web.com Tour's Panama Championship since 2004 and the Latin America Amateur Championship in 2017.

The golf course had developed several issues that needed addressing. Firstly, it was unplayable during much of the rainy season due to heavy clay soils and poor surface and subsurface drainage.

Also, the facilities were not conducive to encouraging growth in participation, particularly among women, juniors and seniors. The driving range and par three course were not attractive to beginners and the main course did not have any tees that would be suited high handicap golfers.

Raymond Hearn, ASGCA, created a master plan that was focused on addressing these issues and delivering a successful future for the club.

His plan included the sand capping of fairways and rough and the introduction of an extensive new drainage system that feeds water to the club's irrigation reservoir and other ponds, enabling the reuse of rainwater. This vastly improved ground conditions and has made the course playable throughout the year.

Hearn has also improved the driving range, introducing the feel of actual golf holes and creating an atmosphere that is inviting for beginners, and has revitalized the par three course to make it more appealing to all golfers, regardless of their skill level.

On the main course, a new set of tees has been proposed for those learning the game. The course can be played from closely mowed areas alongside a round, flat tee plate in each fairway, giving a total course length of 3,750 yards.

"We could not be prouder of our master planning work for the golf course at this very distinguished golf club, regarded as one of the top-ranked clubs in Panama," Hearn said. "Our goal was to provide the club with a roadmap into

the future in terms of improvements. As with any of my master planning assignments, we focused on making the golf course more strategic and playable for all levels of golfing ability."

"Ray's master planning gave our club valuable ideas and a direction into the future with respect to our golf course," said Carlos Sacre, the club's president. "This was important for all golfers that enjoy our course and its future."

Club de Golf de Panamá

Location:

Panama City, Panama

Golf course architect:

Raymond Hearn, ASGCA
Raymond Hearn Golf Course Designs, Inc.
www.rhgd.com

Project summary: Raymond Hearn, ASGCA, prepared a master plan and completed a renovation that addressed drainage problems and allowed the course to remain open during the rainy season, improved practice facilities and added a new forward teeing system to encourage participation.

Partners: Toro (irrigation); EPYSA Panama (engineer); Juan Heras (clubhouse architect)



Doing more with less

Good design and an efficient approach enabled Hunt Valley to make big changes with a small budget

The course at Hunt Valley Golf Club, located on a hilly site a few miles north of Baltimore, had fallen into disrepair and membership was declining.

Members were frustrated by the substandard condition and design of the bunkers and the poor drainage. Prime playing areas were frequently wet, leading to numerous problems including significant disease pressure and compaction, with carts frequently restricted to paths, and overgrown trees posed agronomic and playability challenges. The club also lacked a quality practice range.

A relatively limited budget was available for construction and materials, meaning that renovation work would need to be extremely efficient to deliver results and a turnaround in the club's fortunes.

A renovation project led by Jason Straka, ASGCA, began with a complete redesign of the bunkers. A maintenance-friendly design, along with the use of Better Billy Bunker liner and a specially designed sand, significantly reduced daily bunker maintenance and repair work required after rainstorms.

The more dramatic design improved playability and elevated the curb appeal of the course. Working with a budget that would typically cover a bunker renovation alone, Straka was also able to dramatically improve drainage, by directing large amounts of surface water away from prime playing areas when designing the new bunkers.

"While planning the redesign of the bunkers, we determined to not only reduce their total area, but to seize the opportunity to significantly improve the surface and subsurface drainage around them as well," said Jason Straka. "Golfers may not readily see the drainage improvements, but they will notice improved conditioning and playability as a result of them."

Additionally, the practice range tee complex was completely redesigned to lengthen the range and increase turf area by 100%, and troublesome trees were cleared.

Accomplishing such a large amount of work within a limited budget required creative design talent, a highly organized implementation team and extremely tight and detailed specifications and bidding. The contractor was hand-picked

for their efficient and skilled staff, and Straka spent considerable time on site during a very concentrated construction period to make the project run as efficiently as possible.

"It was a pleasure working in partnership with Arcis Golf and the outstanding team of professionals selected to bring the project to fruition," said Straka.

Hunt Valley GC

Location:

Phoenix, Maryland

Golf course architect:

Jason Straka, ASGCA, and Dana Fry, ASGCA
Fry/Straka Global Golf Course Design, LLC
www.frystraka.com

Project summary: Facing a decline in membership due to deteriorating conditioning and inadequate practice facilities, Hunt Valley turned to Jason Straka, ASGCA, for a solution within a budget that would typically be sufficient for only a portion of the work completed.

Partners: Arcis Golf, LLC (operator); Southeastern Golf, Inc. (construction); Toro (irrigation); Better Billy Bunker (bunker lining); Advanced Drainage Systems, Inc. (pipe); York Building Products (materials); East Coast Sod (turf)



WHICH TEE IS RIGHT FOR ME?

Follow the instructions below to determine which tee location is right for your game.

- 1 Hit driver tee shots from the designated tee zone location toward range poles numbered 1 through 7.
- 2 Note which pole number your driver typically carries beyond.
- 3 Play the tees that correspond with that number for more enjoyment and better pace of play.



Questions? Call the Golf Staff or visit the Golf Shop.

Focusing on the family

A multi-phase renovation has delivered a new facility for families to enjoy

With a declining membership and the need for many types of infrastructure improvement, Longleaf Golf & Country Club was purchased by the U.S. Kids Golf Foundation. The owner, Dan Van Horn, developed a vision to transform the facility into a family club, which he described as “a living laboratory for growing kids and family golf in a club environment, implementing best practices in a real-life situation.”

Issues faced by the new owners were greens and bunkers that were well beyond their life expectancy and in very poor condition, and practice facilities that were spread out and small. And as one of the host courses to the U.S. Kids Golf World Championship, the course needed tees that were appropriate for that event.

The new owners turned to Bill Bergin, ASGCA, to oversee a transformation that would fulfil their ambitions of it becoming a family-oriented facility.

Bergin adjusted course routing around the clubhouse, removing numerous trees, making way for the U.S. Kids Golf Academy, consisting of a 10,000 square

foot putting green, two 5,000 square foot chipping greens and a well targeted practice range with tee space that was more than tripled in size.

To further enhance the property, the ‘Bottlebrush’ short course was built. Consisting of six holes of between 50 and 100 yards, the course is fun for all ages, a place for beginners and experienced players alike.

But perhaps the most significant change at Longleaf is the transformation of the teeing areas on the main course. The club moved from a typical four tee option to become the home of the Longleaf Tee System, a new initiative that matches tee position with golfer’s abilities, based on how far they carry a driver. Golfers can determine the appropriate tee for their ability on the driving range, and the course now has seven teeing locations which, with six additional ‘blended’ options, means the course can now be played at 13 different total distances between 3,269 and 6,709 yards. “We’ve created a model that any club can tailor to fit their course and membership,” says Bergin.

Bergin has also overseen the complete modification and

resurfacing of all of putting surfaces from bentgrass to MiniVerde bermudagrass. Bunkers have been transformed and significant turf reduction has reduced the maintenance requirement and exposed sandy waste areas and native grasses throughout the property.

“Since Bill’s work here at Longleaf, our total rounds are up nearly 20 percent over a year ago and I’m hearing a lot of happy members and guests,” says Jeff Cowell, the club’s general manager.

Longleaf G&FC

Location:

Southern Pines, North Carolina

Golf course architect:

Bill Bergin, ASGCA
Bergin Golf Designs
www.bergin golf.com

Project summary: By implementing a three-phase renovation focusing on the addition of an enlarged and centralized practice facility, a six hole short course, and tees that fit all levels of play, Longleaf Golf & Family Club has emerged as a leader in family golf in the Pinehurst area.

Partners: Landscapes Unlimited (construction)



Revitalizing a historic course

Centennial project showcases great golf property at Meadowbrook CC

Meadowbrook Country Club in Northville, Michigan, sits on land that is ideal for natural golf. Its first six holes were developed by Willie Park, Jr. in 1916 and the club has a tournament history that includes the 1955 PGA Championship, won by Doug Ford.

However, poor drainage, improper turf varieties and years of tree growth, combined with increasing golfer expectations, meant the course was failing to achieve the standards required by members.

The original greens were severely sloped and drained poorly. Portions of the course required closure to both play and maintenance during even the most casual of rain events, and tree growth choked play while shading many of the greens, leading to stressed turf, in poor condition.

Meanwhile, local economic conditions had recovered and stabilized, and both existing and prospective members were considering alternatives for their club memberships.

Member inclusivity, honest debate, and thorough due diligence were the foundations upon which Andy Staples, ASGCA, created a new master plan for the course, built on the design intent of original architect.

With a focus on sustainability, club leadership garnered 85% approval for the new plan, and 76% approval to close the course for an entire year while work progressed, a significant feat for a northern climate golf course.

Staples' plan saw the introduction of a modified-depth USGA greens construction method, installation of over 15 miles of drainage pipe as the fundamental changes that would address the ongoing drainage issues. A new flat-bottom bunker style embraced Park's original design intent and limited upfront construction costs, allowing the club to forego bunker liners. The integration of 25 acres of no-mow fescue and the planting of the latest fairway and rough turf varieties would reduce water use by nearly 60 percent.

The turfgrass changes would improve the playing experience. "With the addition of more bentgrass on the fairways, approaches and green surrounds, the course will provide more options of play, which golfers will need to think their way around," said Staples. "There is no doubt in my mind that Meadowbrook will be unique among clubs in the area."

Six new sets of tees provide options for players of every skill level, and through the process of strategic tree

management, Meadowbrook's property is being showcased like never before.

Members' pride in its club as at an all-time high. "The club's decision to move ahead with this project in our centennial year is paying off and is positioning Meadowbrook as one of the leaders in how a renovation should be done," said general manager Joe Marine.

Meadowbrook CC

Location:

Northville, Michigan

Golf course architect:

Andy Staples, ASGCA
Staples Golf Design
www.staplesgolfdesign.com

Project summary: With deteriorating turf health and playing conditions, satisfaction among members of Meadowbrook Country Club had declined, and demand for quality and future sustainability increased. With a forward-looking process, the club rallied membership to overwhelmingly approve a plan to take Meadowbrook to new levels of environmental and fiscal responsibility.

Partners: Michael Kuen & Associates, Inc. (irrigation design); Dr. Trey Rogers, Dr. Joe Vargas, Brian Mavis (agronomy); TDI, Inc (construction); XGD Systems (drainage); Leibold Irrigation, Inc. (irrigation); Tee-2-Green (grassing); Profile Products (hydromulch)



An experience like no other

A new 13-hole par three course in the Ozarks is designed to inspire people to play golf

Built among the rocky Ozark mountains about fifty miles south of Springfield, Missouri, the new Mountain Top Course at Big Cedar Lodge is a unique 13-hole par three golf experience designed by Gary Player.

Every decision made during the project was focused on delivering a fun and enjoyable par three course that would inspire people to play golf. The ultimate goal was to maximize space, providing stunning visual aesthetics and fun playing attributes, capturing the true feel of the Ozark region.

The site for the course was dominated by a rock dome that was creatively manipulated to expose ancient rock formations, which were thoughtfully incorporated within the design. Gary Player explains: “Instead of blasting rock, it was meticulously uncovered, capturing the true essence of Ozark history. The footprint and severity of the topography was a limiting factor, but creative use of the

rock allowed us to expand playable areas, providing ample space for this user-friendly golf facility.”

Excess rock was used to create retaining walls and large fills to improve widths of fairways, implement large land forms and gain distance on some of the shorter holes. A careful balance of earthwork on a very compact site provided cost efficiencies that otherwise would have been lost.

With a variety of teeing options, the 13 holes range in distance from 66 to 221 yards and provide long views over the Ozarks. There are no cart paths, the distances between greens and tees are short and a creative routing that allows golfers to play the full 13, or options from 3-to-10 holes, depending on the time they have available.

The introduction of native grasses and indigenous plants promotes a sustainable environmental approach that supports Ozark wildlife. “The vision for this innovative course was

to provide a golf experience that everyone can enjoy while embracing nature. There is no doubt this course will be instrumental in developing a world class golf experience that embraces economic, environmental and social sustainability,” says senior designer Jeff Lawrence, ASGCA.

Mountain Top Course

Location:

Hollister, Missouri

Golf course architect:

Jeff Lawrence, ASGCA

Gary Player Design

garyplayer.com/gary-player-design

Project summary: Set in the rocky Ozark mountains, the design of the unique and innovative Mountain Top Course at Big Cedar Lodge utilized natural features and on-site materials to produce a fun and playable 13-hole par three golf experience that inspires golfers of all skill levels to play the game.

Partners: Better Billy Bunker (bunker lining); Jacklin Seed (grassing); Toro (irrigation)



Respecting tradition

A renovation plan for The Royal Ottawa is taking the club into the future while preserving the traditions of the past

One of the oldest clubs outside the UK, The Royal Ottawa Golf Club was founded in 1891. Its present course was established in the early 1900s, a Tom Bendelow design with later updates by Willie Park, Jr.

The club prides itself on continually upgrading its facilities and sought an improvement plan to bring the course up to modern standards, address playability issues on the opening two holes and improve the practice facilities in line with its mission of becoming a family-oriented golf facility.

Different committees, architects and contractors had left different styles throughout the golf course, and the club wanted to revert to a traditional style and design continuity.

The club sought to improve the first two holes, which were considered unfair by the membership given the severe elevation changes and proximity of the out of bounds on the left.

Additionally, it wanted to improve the playability of the course and enhance its practice facilities, to attract families, retirees and new golfers.

Given the relatively short golfing season in Canada, all of this was to

be achieved without the closure of holes during construction.

In proposing a solution, Neil Haworth, ASGCA, began by studying early aerial photos of the golf course to understand its historical character. As a result, all bunker complexes are being reshaped into a consistent, traditional style, putting surfaces are to be squared off at the corners to match the original geometric design and tee complexes will be rebuilt to fit more naturally onto the existing terrain. Many new tees have been proposed to provide more variety in length to the golf course and to reduce forced carries over streams and valleys.

To address the playability issues on the first hole, new tees were built to allow golfers to reach the plateau landing area, eliminating the blind second shot, and a new green was built to maintain the hole as a par five. A fairway bunker was added into the ridge to add strategy to the hole and trees cleared at the new green site to allow more sunlight on the green.

"The new par three can play from 110-to-185 yards and is slightly uphill," says Haworth. "The green sits naturally on a small, sandy plateau which is framed by stately pine and

sugar maple trees. The design goal was to build a hole that looks like it was part of the original 18 built back in the early 1900s."

Two holes of the club's Royal Nine short course will be relocated to make way for a new driving range, while the existing range will be converted into a short game area and par three course that will be popular with families.

The project has been meticulously planned over three years with new holes being built in summer months and renovations to the existing course in fall when there are fewer golfers.

The Royal Ottawa GC

Location:

Ottawa, Canada

Golf course architect:

Neil Haworth, ASGCA
Nelson & Haworth
www.nelsonhaworth.com

Project summary: A master renovation plan for The Royal Ottawa Golf Club is bringing the golf course up to modern standards, addressing safety issues and making the facilities more family-oriented, while respecting its traditions as one of Canada's premier clubs.

Partners: Rain Bird (irrigation); Lacroix Golf Creations (construction); Mountainview Turf (grassing); Chambers USA (planning)



A bright future

Comprehensive renovation delivers a strategic design for future generations to enjoy

At Vestavia Country Club, in Birmingham, Alabama, an outdated and failing irrigation system prompted the club to consider a renovation of its golf course, originally designed by George Cobb in the 1950s.

Initial discussions revealed significant member dissatisfaction with the many aspects of the course, including playability, strategy, aesthetics and turf conditions, which were having an impact on membership sales and club revenue, as well as the club's standing in the community.

The club selected Lester George, ASGCA, to help develop a masterplan for improvements. A five-year process began with architect-run focus groups, design study and due diligence before design, project estimating, bidding and then execution of a \$6.5 million complete reconstruction of the golf course.

The project resulted in the re-routing and reconstruction of all 18 holes (including the construction of eight completely new holes), with new strategy, tees, greens, bunkers,

streams, drainage paths and turf varieties. New practice facilities were developed, including the driving range and putting green.

According to George: "The design was predicated on improving the strategy, playability, fun, conditions and sustainability of the golf course. The focus was retaining, gaining and attracting new members while creating a golf course that had multiple lines of play for all playing abilities."

He fashioned a golf course that channels many classic hole design templates such as Eden, Alps, Redan, Biarritz and Short, to accomplish the task of adding interest. Fairways have been widened, greens enlarged, and rough areas reduced to promote playability, pace-of-play and fun. Family tees were added to encourage and promote playing options for youth and seniors, making the course appealing to golfers of all abilities.

With the course now ready to re-open, members are once again excited and proud of their golf facilities and there has been a surge of new interest, with 70 memberships added

during the year it has been closed for construction. The club's future again looks bright.

Vestavia CC

Location:

Birmingham, Alabama

Golf course architect:

Lester George, ASGCA
George Golf Design, Inc.
www.georgegolfdesign.com

Project summary: A comprehensive renovation project at Vestavia Country Club in Birmingham, Alabama, has taken advantage of an impressive site in the foothills of the Appalachian mountains, transforming a dated and tired golf course into a sustainable and playable strategic design that has restored members' pride in their facilities and broadened appeal for all levels of golfer.

Partners:

Landscapes Unlimited (construction); Rain Bird (irrigation); EC Design Group (irrigation design); Lathan Associates Architects (building design); SilverCore (landscape design); Schoel Consulting Engineers (engineering); Keeling Company (irrigation supply); Global Golf Advisors (consultancy); Golf Agronomy International (agronomy); Better Billy Bunker (bunker lining); PermaEdge (bunker edging)



Welcoming new golfers

The addition of a short course at Wellesley CC in Boston is helping attract new players to golf

Founded in 1910, Wellesley Country Club on the outskirts of Boston has a long tradition of providing a variety of recreational and social opportunities for families. Its golf course combines nine holes originally laid out by ASGCA Founding Father Donald Ross with another nine added by ASGCA Past President Geoffrey Cornish in the 1960s.

With a large and thriving membership, the club was finding that opportunities for those learning to play golf were limited. It was concerned this would be a deterrent to families seeking memberships and would not help with the growth of younger members.

Mark Mungeam, ASGCA, who had completed a renovation of the club's course in advance of it hosting the 2010 Massachusetts Open as part of its centennial celebrations, proposed the development of a new short game facility on a largely unused eight-acre triangular parcel of land between two existing holes at the southern tip of the property. The site presented some difficulties: there was significant elevation change and it was near wetland in the protected Charles River watershed, designated by the Clean Water Act as an 'impaired' water body.

Mungeam's objective was to carefully fit the facility into the space available while protecting adjacent environmentally sensitive areas from course run-off. He designed the new par-three Carriage Course, with six holes ranging in length from 65-to-150 yards, and a new practice putting green.

In planning the facility, Environmental & Turf Services, Inc. prepared a Phosphorous Control Plan to alleviate concerns about impact on the Charles River watershed and Town of Wellesley water supply aquifer, and all disturbance was kept at least 100 feet from wetlands.

A double row irrigation system from Rain Bird provides coverage for most of the course, and fringe areas without irrigation were planted with drought-tolerant fine fescue grasses.

Seeding of the course took place in August to ensure rapid turf establishment and, due to the potential for thunderstorms, all seeded areas were protected from erosion using hydromulch from Profile Products.

The design makes use of the rolling terrain to provide variation in the types of shot that are required, giving players an opportunity to practice shots that will be required on the club's 18-hole course. In

collaboration with superintendent William Sansone, hard slopes and elaborate shaping was avoided to reduce maintenance requirements.

"We decided to build easily mowed features, maintained at the same level as the main course so as not to lose its desirability for practice play," says Mungeam. "A unique feature of the design is ribbons of close-cut turf extending from each tee to the approach fairways to lessen the intimidation for beginners."

Wellesley CC

Location:

Wellesley, Massachusetts

Golf course architect:

Mark Mungeam, ASGCA
Mungeam Cornish Golf Design, Inc.
www.mcgolfdesign.com

Project summary: Wellesley Country Club is a successful private club with a full, active membership. Its course has 'family' tees, but due to its popularity there is limited time available for beginners to play. With the help of Mark Mungeam, ASGCA, the club created a new short course with six par-three holes suitable for beginners or for experienced players to practice their short game.

Partners: Northeast Golf & Turf/Rain Bird (irrigation); Profile Products (soil amendments); Country Golf, Inc. (construction); Environmental & Turf Services, Inc. (permitting)



Bluegrass flat pad
10,392 sq ft
Elev. 1111

Green surface
25,803 sq ft

Perfect putting

An illuminated Himalayas-style putting green provides fun for all at Westfield Country Club

Westfield Insurance Company maintains a 36-hole golf complex in Westfield, Ohio, for the entertainment of its agents, clients and guests, and for members and junior golfers in the local community.

The club wanted to create a new golf experience that could entertain both golfers and non-golfing members and guests. ASGCA Past President Dr. Michael Hurdzan, ASGCA Fellow, of Hurdzan Golf Design suggested the club take inspiration from the popular Himalayas putting course in St Andrews, Scotland. "While not all guests play golf, everyone can putt," says Hurdzan, who recommended a huge, undulating putting green and event lawn next to Westfield's outdoor pavilion.

To accommodate his proposed design, Hurdzan proposed shortening the par-five tenth hole on the club's South course, which started next to the pavilion, to a par four. This provided the space to build a 25,000 square feet Himalayas-style putting

green, with a 5,000 square feet event lawn and spectator area in the center.

Since many pavilion functions take place after sunset, it was essential that the facility could be used at night. To increase useable hours without creating objectionable light pollution for neighbors, Hurdzan recommended Toro Quick-Connect Perimeter Lighting and Twilight Golf Cups to light the entire putting green.

Michael Kuhn & Associates, Inc. designed the lighting in conjunction with the new irrigation system. Landscapes Unlimited handled all construction work, subcontracting installation of both the lighting and irrigation system to Leibold Irrigation, Inc.

Westfield's golf course maintenance staff, headed by Mark Jordan, CGCS, worked alongside the contractors to incorporate aerification plugs from their existing greens into the seeded areas, so that the grass texture of the new green would match those on the golf courses.

The result is a unique entertainment experience for all Westfield Group CC

users, as well as for spectators who prefer to watch the fun. This bold move has helped the club to provide a fun, new experience for its members and guests while also elevate its prestige and recognition among peers.

Westfield Group CC

Location:

Westfield Center, Ohio

Golf course architect:

ASGCA Past President Dr. Michael Hurdzan, ASGCA Fellow
Hurdzan Golf Design
hurdzangolf.com

Project summary: Westfield Group Country Club wanted a unique golf experience to entertain both golf and non-golf members and guests. Hurdzan Golf designed a 25,000 square feet 'Himalayas' putting green which surrounds a 5,000 square feet event lawn at Westfield's outdoor party pavilion. Also incorporated was Toro's Outdoor Lighting System and Twilight Golf Cups

Partners: Landscapes Unlimited (construction); Toro (irrigation and lighting); Michael Kuhn & Associates, Inc. (irrigation and lighting design); Leibold Irrigation, Inc. (installation)

AMERICAN SOCIETY OF GOLF COURSE ARCHITECTS MEMBERS' WORLDWIDE REACH

OUR MEMBERS...

HAVE DESIGNED COURSES IN

92

DIFFERENT COUNTRIES



FOR SOME COMPARISON, THE 2010
WINTER OLYMPICS IN VANCOUVER
WELCOMED ALTHLETES FROM
ONLY 82 NATIONS



ON AVERAGE HAVE WORKED
OUTSIDE THE US & CANADA IN

6

COUNTRIES

UNPARALLELED EXPERIENCE

147



AVERAGE PROJECTS
TOUCHED OR CONSULTED

71



AVERAGE MASTER
PLANS CREATED

42



AVERAGE NEW 18-HOLE
COURSES DESIGNED

29



AVERAGE YEARS AS A
GOLF COURSE ARCHITECT

22



AVERAGE 18-HOLE
COURSES REDESIGNED



ASGCA LEADERSHIP PARTNERS



Supporting Education in the Golf Course Industry

ASGCA thanks the following companies for their continued support of golf course development and renovation—helping ASGCA members do their jobs better, for the good of the game.

MAJOR LEVEL PARTNERS



MERIT LEVEL PARTNERS



SPONSORS

